



KDE SC - Ark

Ondřej Záruba

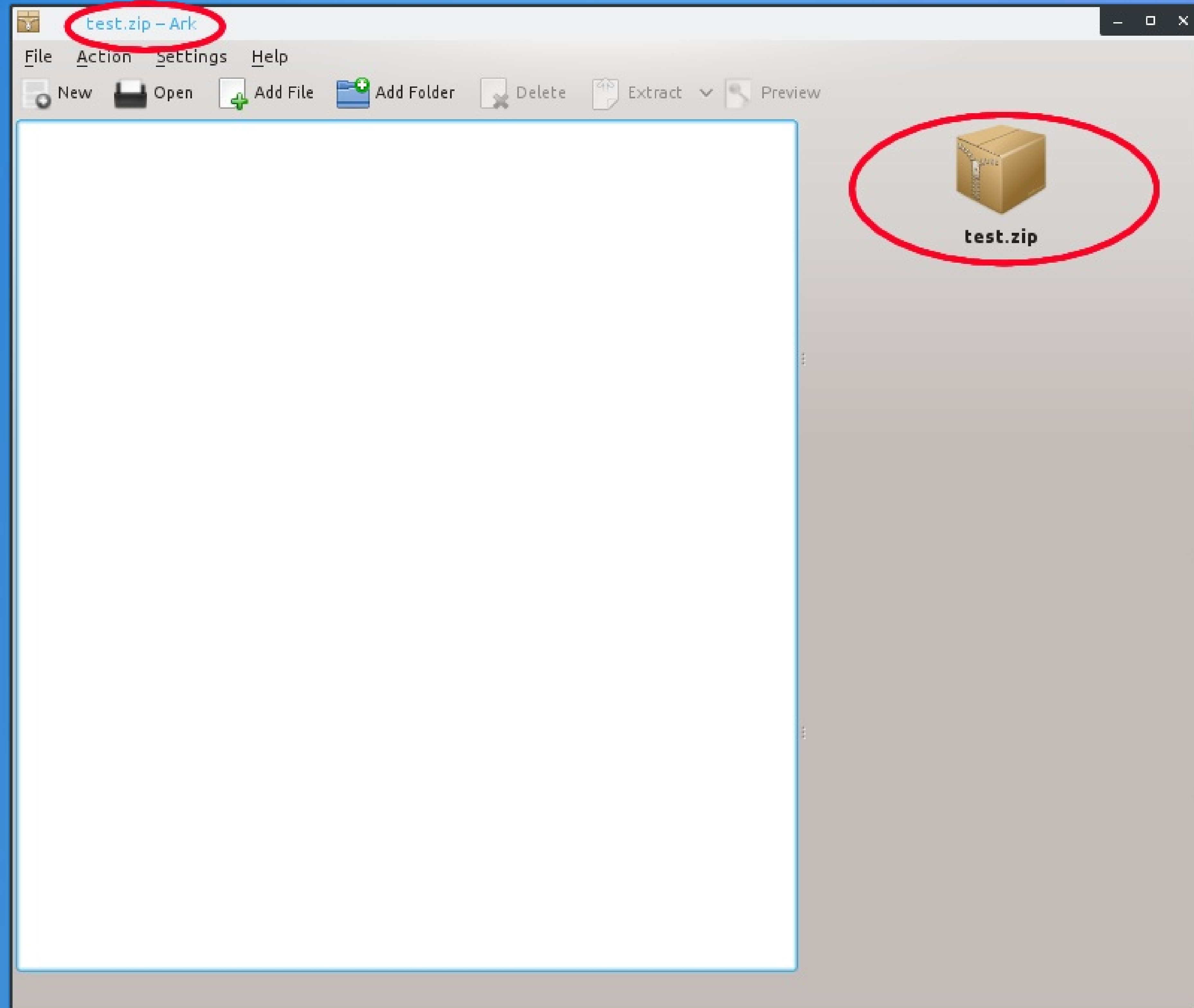
zarubond@fel.cvut.cz

15.5.2014 | FEL ČVUT

Be Free. KDE



Problem description



Ark

- Program is spited into several libraries
- KParts system (similar to ActiveX)
- Problematic testing



Solution

- Problem with file type detection
- Archive file type determined by file extending

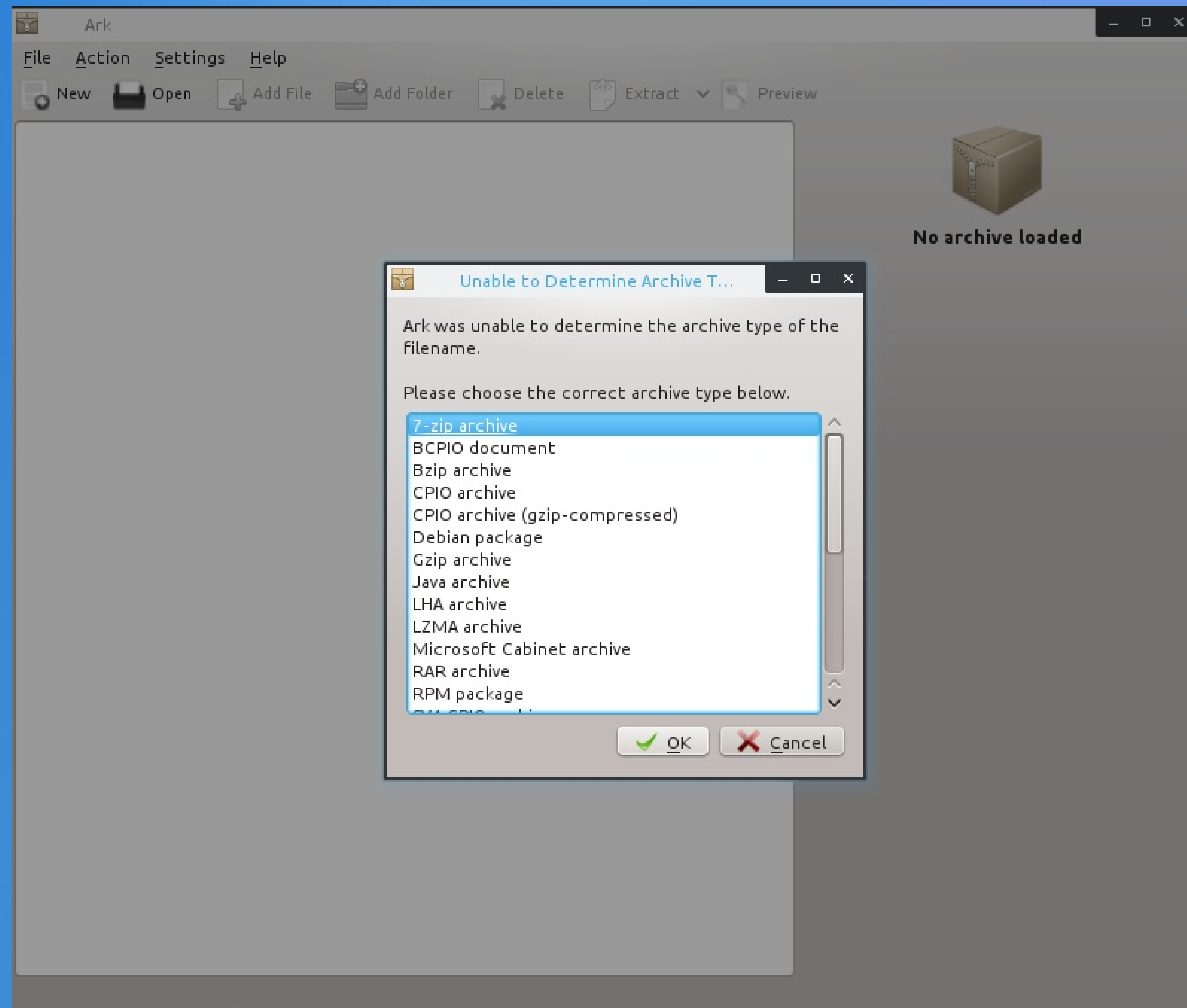
```
KMimeType::findByNameAndContent(filename,  
buffer)->name();
```

- Solution is to detect file type by content of the file

```
KMimeType::findByContent(buffer)->name();
```



Result



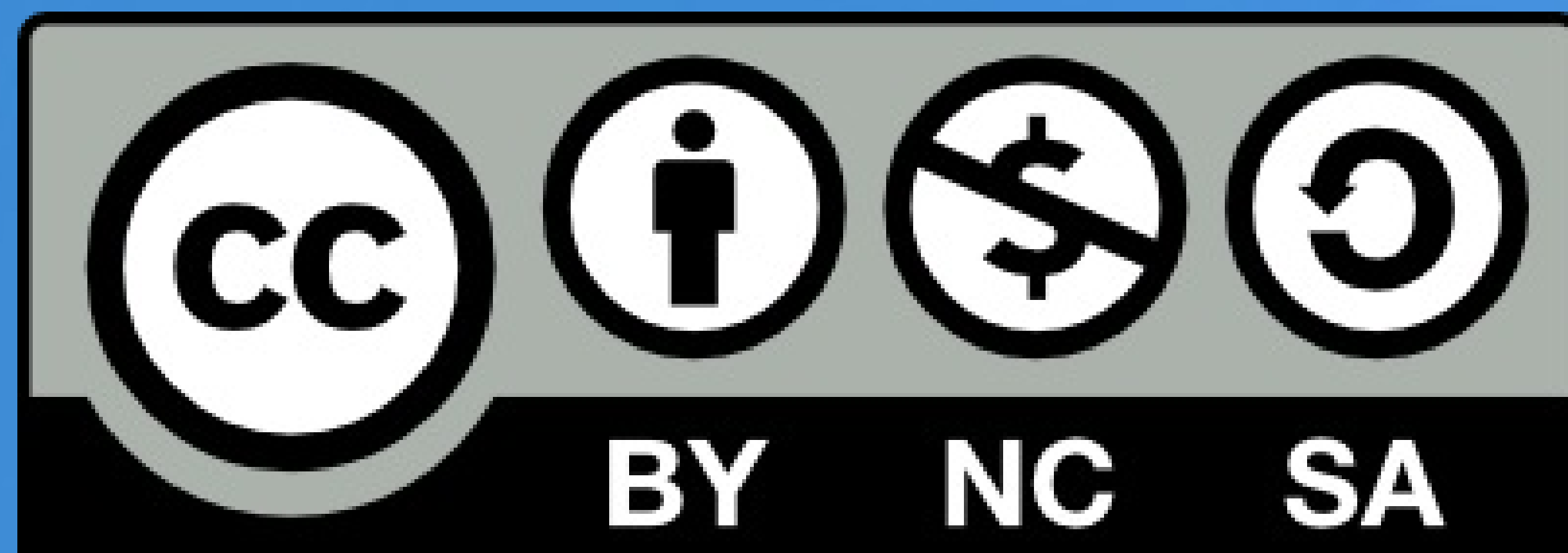
Conclusion

- Patch was submitted to KDE review board
- One review of patch
- Still waiting for next...





Thank you for your attention



Be Free. KDE

