

Eclipse

TOMÁŠ MILATA



...not only a Java IDE

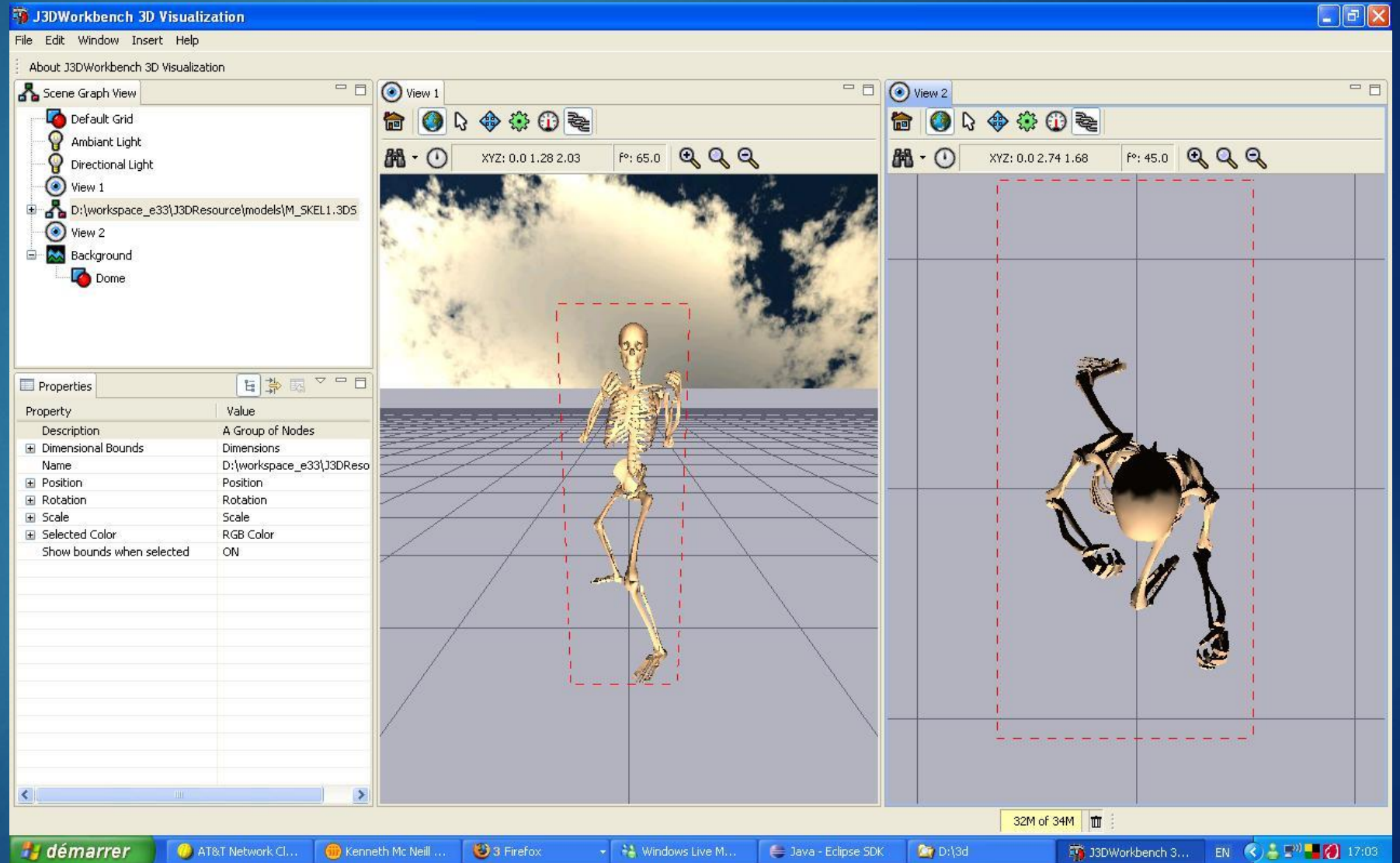
- ▶ generic platform for building desktop apps
- ▶ extensible with plugins

- ▶ Examples

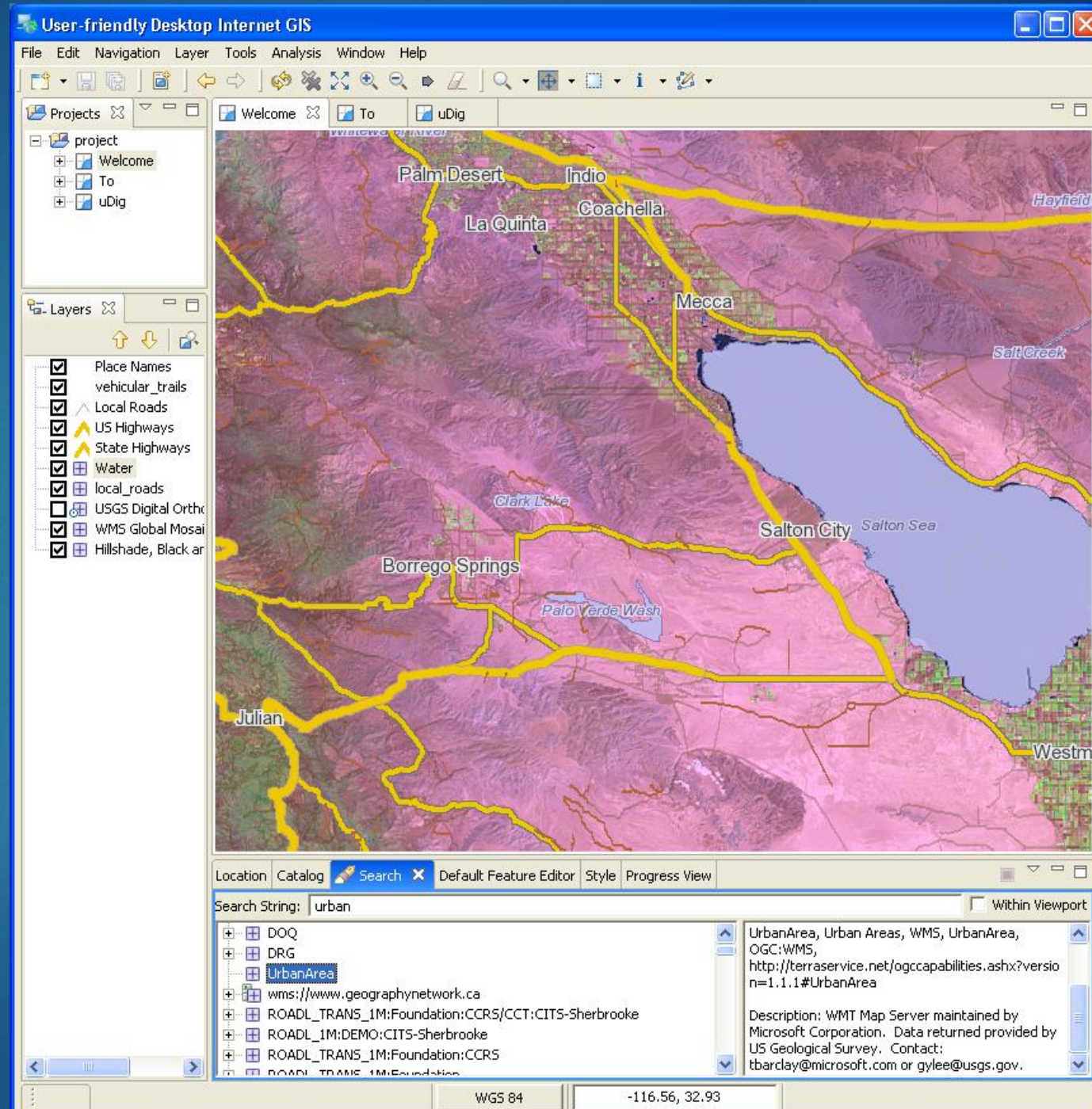
- ▶ FlashBuilder by



► J3DWorkbench



► uDig GIS



History

- ▶ Project founded By IBM in 2001
- ▶ Since 2004 directed by Eclipse Foundation
 - ▶ Non-profit corporation
- ▶ Both individuals and commercial companies

Technologies

- ▶ Java
- ▶ OSGi – bundle framework
- ▶ Swing

Project Structure

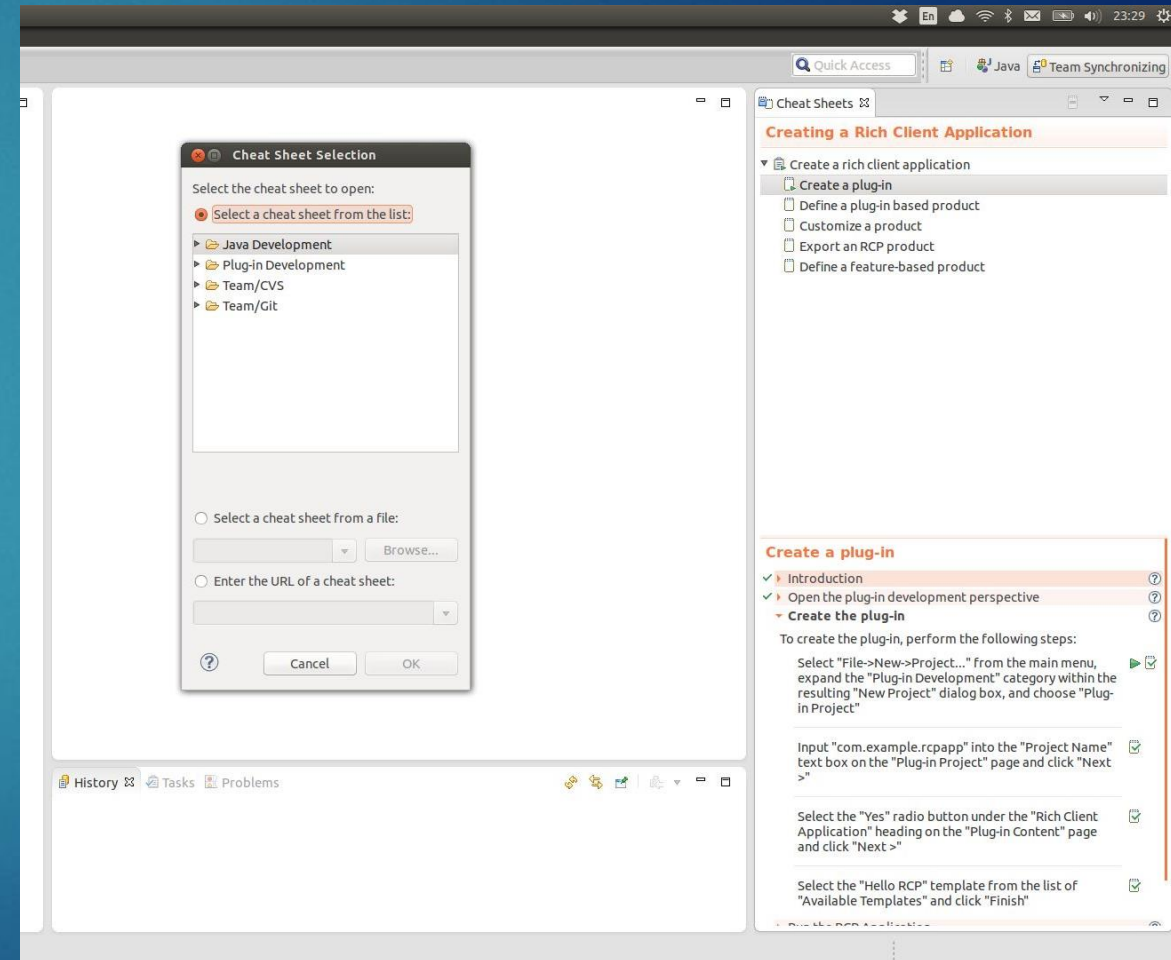
- ▶ “core” of the platform
 - ▶ Plugin management
 - ▶ UI
 - ▶ Runtime, services, tools , ...
- ▶ Domain-specific projects
 - ▶ Programming language, application server, VCS, frameworks, ...
- ▶ And many other projects not managed by the Eclipse Foundation

Organization of development

- ▶ Separate mailing list for each component project, forums
- ▶ Bugzilla
 - ▶ Bug reports and discussions
- ▶ Eclipse.org account
- ▶ CLA (Contributor License Agreements)
- ▶ Gerrit code review system
 - ▶ CLA required
 - ▶ Hudson check
 - ▶ Verification by developer
- ▶ Bugs assigned to component owner

My task

- ▶ Fix a bug
 - ▶ In Platform UI project
 - ▶ Cheat Sheets
 - ▶ User assistance tool
 - ▶ Can be loaded from file
 - ▶ Option to load it from file cannot be selected using keyboard
- ▶ Reproducible (I have tried)
- ▶ Possible solution
 - ▶ Wrong tab-indices but may be much more complex



See you on May 15th...

- ▶ References

- ▶ [Eclipse project](#)

- ▶ [Adobe](#)

- ▶ How to contribute to Eclipse on [vogella.de](#)