

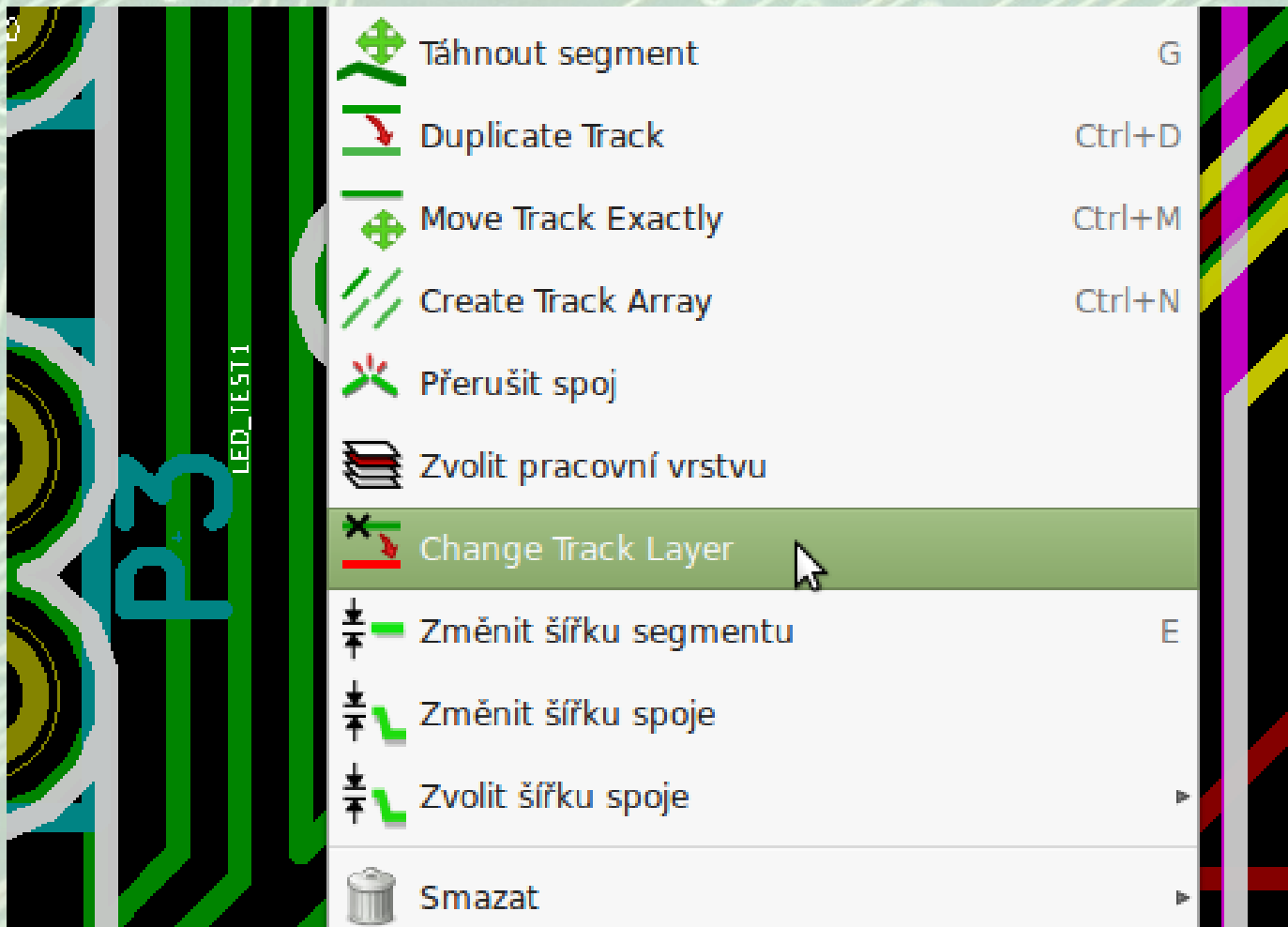
KiCad EDA

Joel Matějka

- My task and solution
- Issues
- Future work
- Conclusion

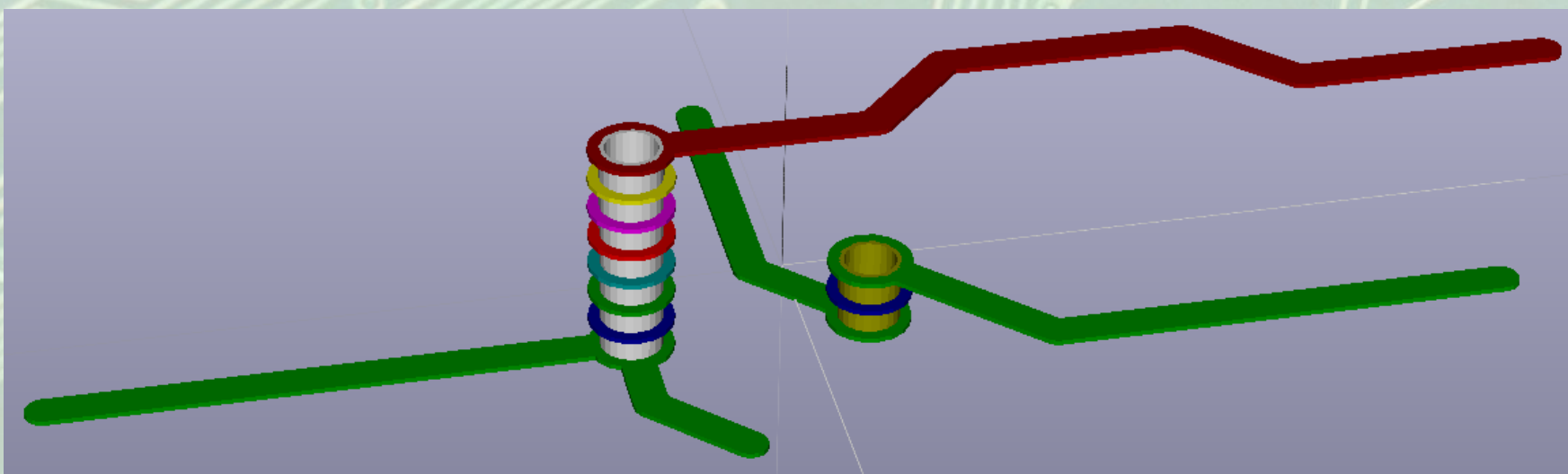
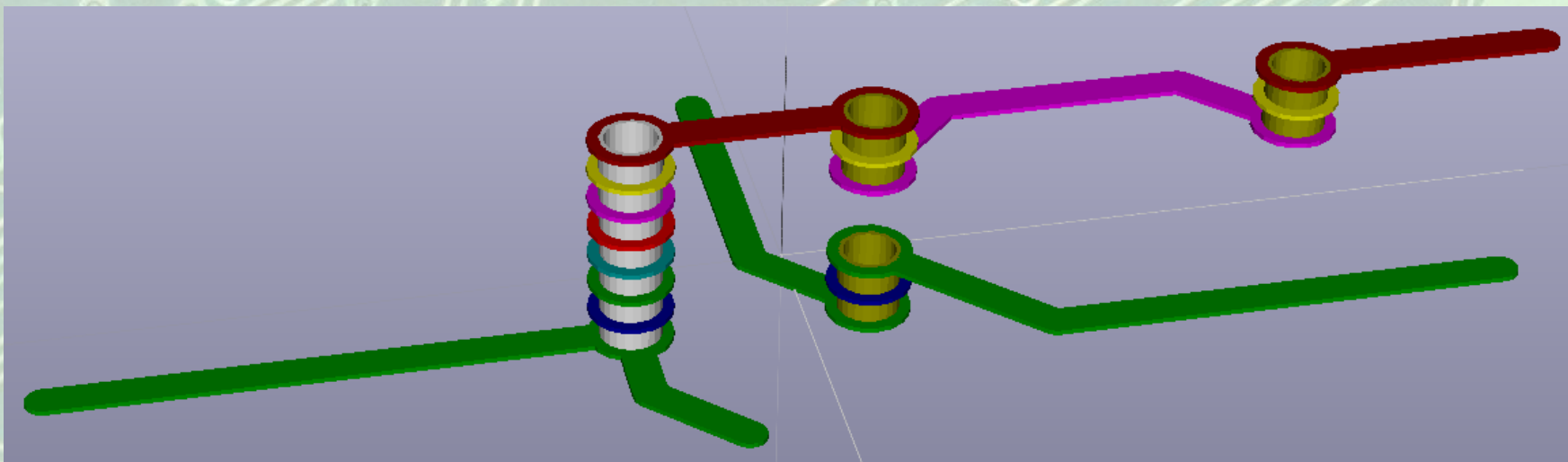
Change track layer

In KiCad EDA



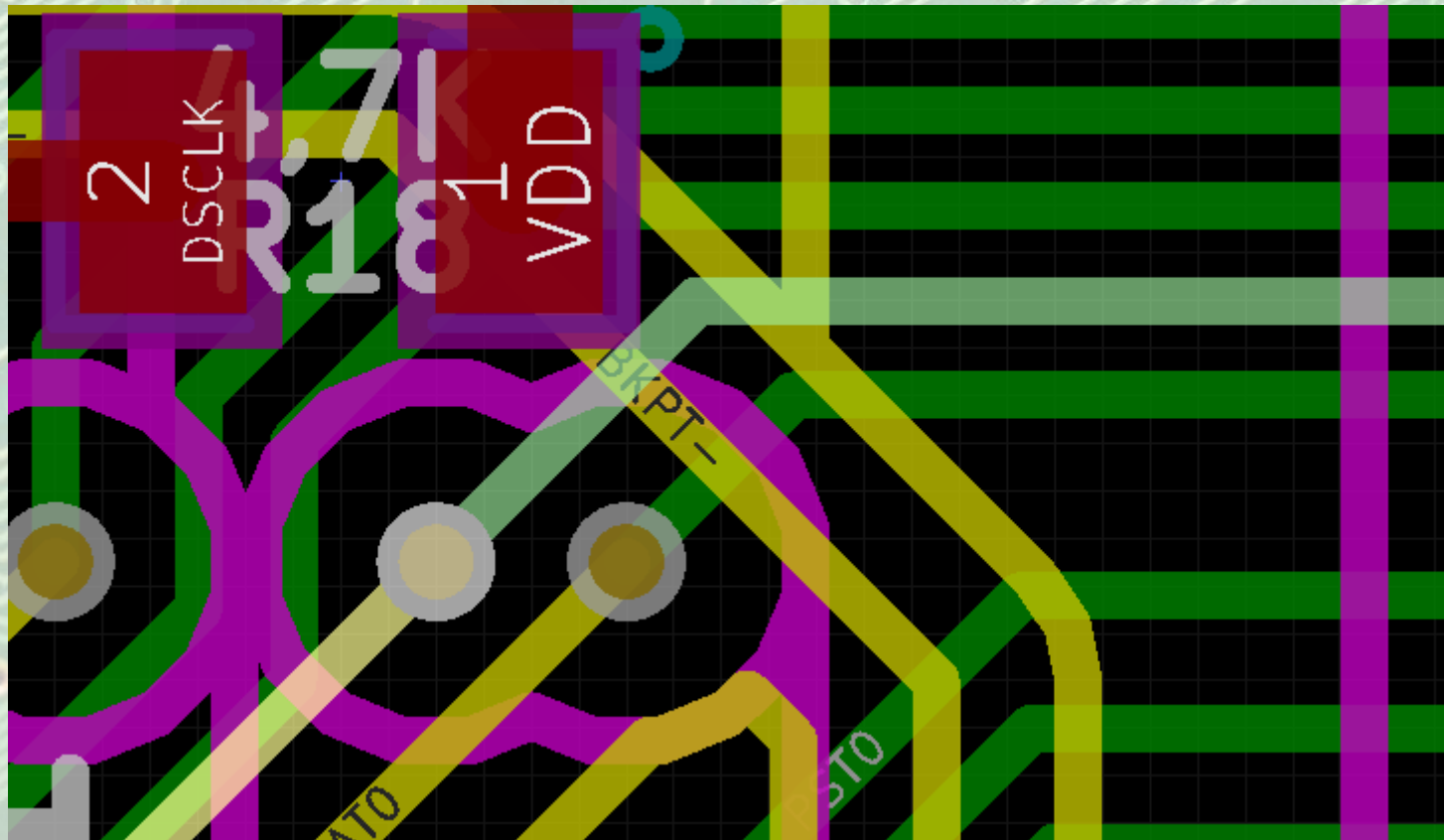
Change track layer

In KiCad EDA



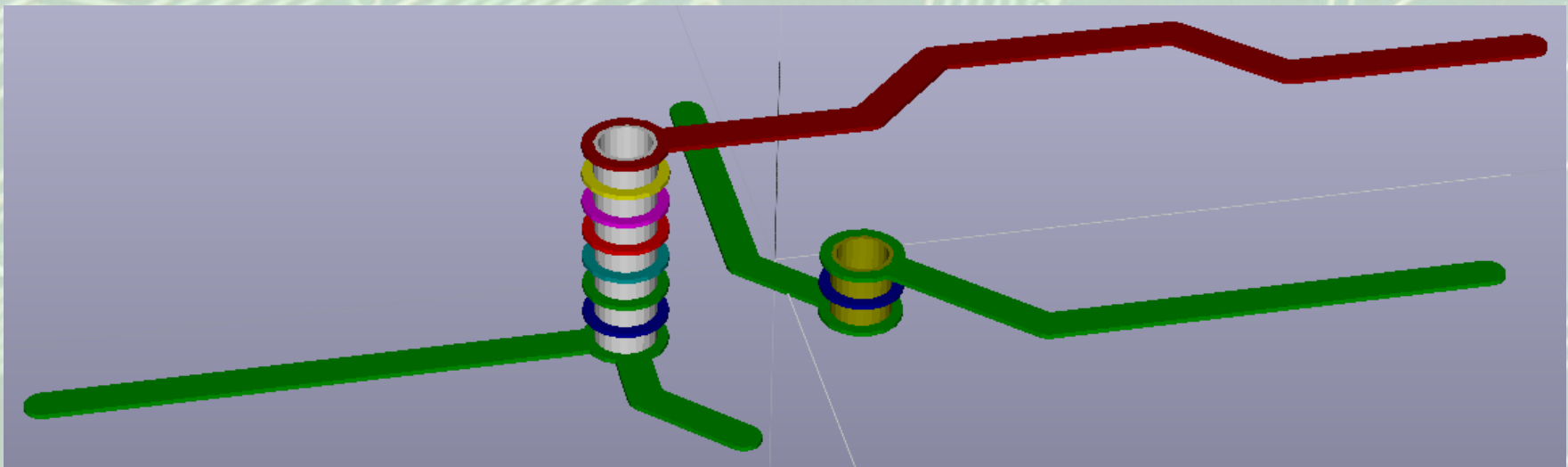
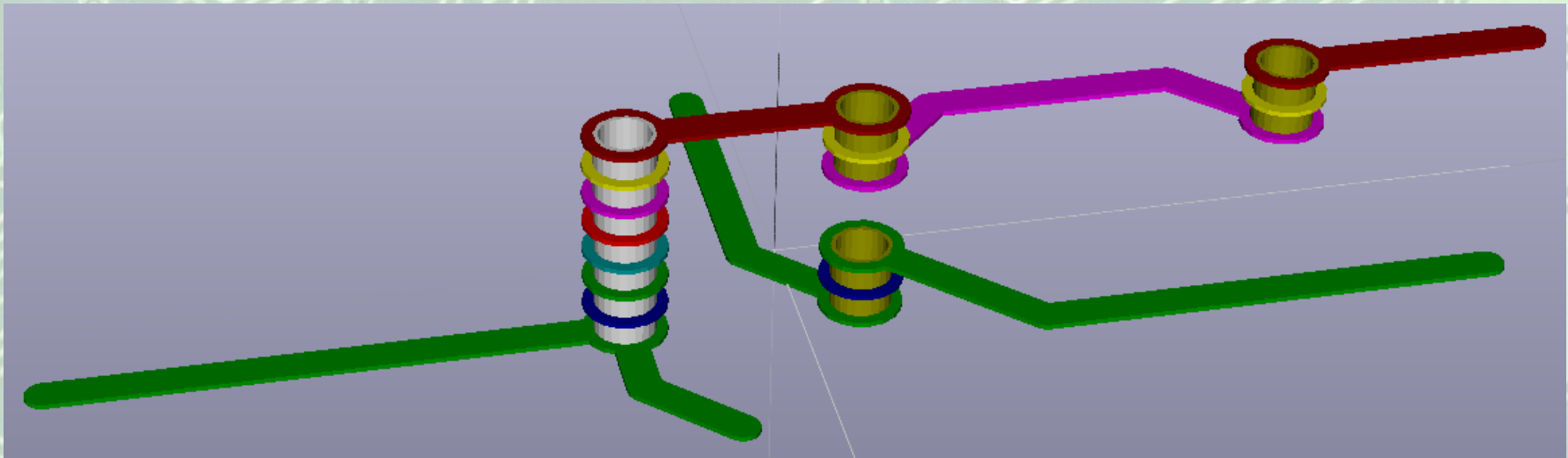
Change track layer

In KiCad EDA



Change track layer

In KiCad EDA



Results of the work

- New track part selection method
- Rewrote whole track selection
- Implemented new feature
- Total 1 600 lines of changes

Issues

- Not implemented elementary methods
- **Planned stable release = new feature freeze**
- Communication

Future work

- Apply selecting of trace part
- Wait for stable release

Conclusion

- Working a new feature
- Response from team member
- Will not be merged for a long time
- Chance to apply part of work to the end of the semester
- Good experience with big software

Resources and links

Project homepage:

<http://www.kicad-pcb.org>

Source code:

<https://launchpad.net/kicad>

Developers mail-list:

<https://launchpad.net/~kicad-developers>

Bazaar version control system:

<http://bazaar.canonical.com/en/>

OpenHub site:

<https://www.openhub.net/p/kicad>

Selected bug:

<https://bugs.launchpad.net/kicad/+bug/593953>