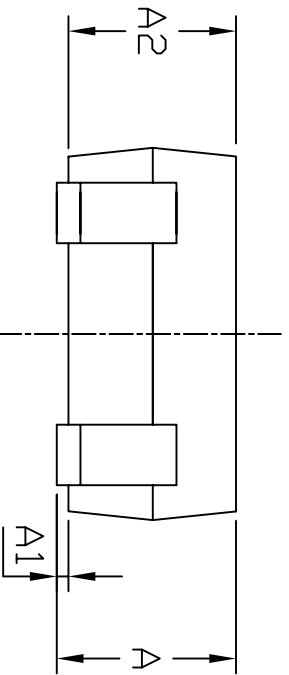


SYMBOL	MIN	MAX
E	1.15	1.35
D	1.85	2.25
HE	1.80	2.40
A	0.80	1.10
A2	0.80	1.00
A1	0.00	0.10
e	0.65 BSC	
b	0.25	0.40
c	0.10	0.18
L	0.26	0.46



- NOTE:
1. ALL DIMENSIONS ARE IN MILLIMETERS.
  2. DIMENSIONS ARE INCLUSIVE OF PLATING.
  3. DIMENSIONS ARE EXCLUSIVE OF MOLD FLASH & GATE BURR.
  4. DIE IS FACING UP FOR MOLD AND FACING DOWN FOR TRIM/FORM. ie :REVERSE TRIM/FORM.
  5. PACKAGE SURFACE TO BE MIRROR FINISH.
  6. FOOT LENGTH MEASURING BASED ON GAUGE PLANE METHOD.

E	Note:METAL BURR REVISE TO GATE BURR AS PER JEDEC SPEC.	02/01/02	ANDREW	PT
D	CHANGED FOOT LENGTH TO 0.26-0.46MM(WAS 0.1-0.3) BASED ON GAUGE PLANE METHOD AND REMOVED Q1 DIMENSION.	25/07/00	ANDREW	PT
C	CHANGED FORMING PROFILE	06/09/99	ANDREW	PT
B	ADD NOTE NO.5 & 6.	30/04/99	ANDREW	PT
A	CHANGED PKG LENGTH TO 1.86-2.26(WAS 1.80-2.20).	08/01/99	ANDREW	PT
0	ORIGINAL DRAWING.	13/04/98	ANDREW	PT
REV.	DESCRIPTION	DATE	BY	APPD

TOLERANCES  
REFER TO THE  
SPECIFICATION  
ABOVE.

UNIT:	SCALE:
MM	NTS

SYMBOL

DWN: ANDREW	DATE: 02/01/02
APPD: CH TAN	DATE:
APPD: CK TANG	DATE:
APPD: CW CHAI	DATE:
APPD: SRI	DATE:
DWG. NO: SCT03-POC-001	REV.: E

SCT03 3L  
Package Case Outline