



# ESMSKA

## Open Source Programming

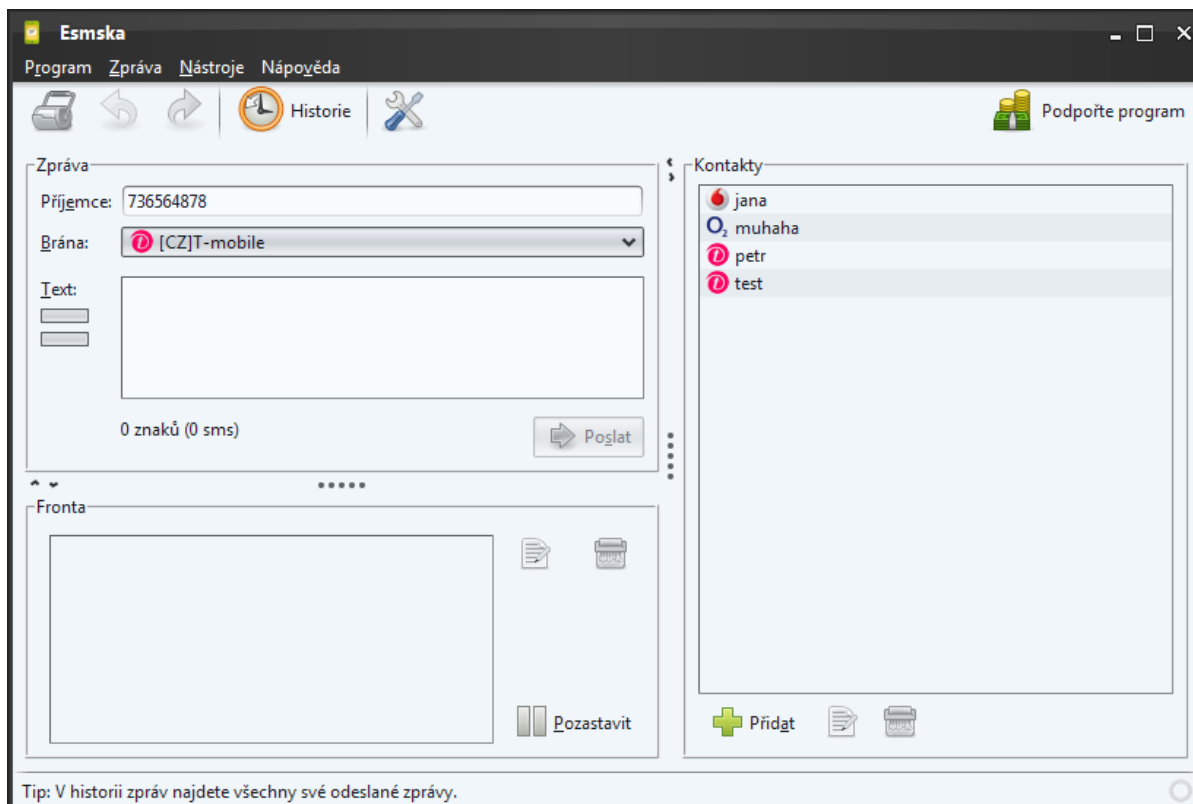
Tomáš Kozák

2013/2014

# ASSIGNMENT



- When an unknown number is provided in the recipient field, offer an easy way to create a new contact from this dialog - show a button nearby.



# MY CHANGES



The screenshot displays the Esmka application window. The main interface is divided into several sections:

- Program**: Contains menu items for *Program*, *Zpráva*, *Nástroje*, and *Nápověda*.
- Toolbar**: Includes icons for a printer, back, forward, history (Historie), and settings (wrench icon).
- Zpráva (Message)**: Shows the recipient (*Příjemce*: 736285567), the gateway (*Brána*: [CZ]T-mobile), and a text input area. The status at the bottom indicates "0 znaků (0 sms)".
- Kontakty (Contacts)**: A list of contacts including *jana*, *muhaha*, *petr*, and *test*.
- Fronta**: A section for managing a queue, currently empty.

A **Nový kontakt** (New contact) dialog box is overlaid on the main window. It contains the following fields and controls:

- Jméno** (Name): An empty text input field.
- Číslo** (Number): A text input field containing the number *+420736285567*.
- Výchozí brána** (Default gateway): A dropdown menu.
- Buttons**: *Navrhnout* (Design), *Vytvořit* (Create), and *Zrušit* (Cancel).

At the bottom of the application window, a tip reads: *Tip: Malý finanční příspěvek je jedna z možností, jak podpořit další vývoj programu.*



# COMMUNICATION WITH DEVELOPERS



- Github pull request - quick code comments
- After some corrections accepted to repository





- Thank you for your attention

